

**Class: 1 Ladybirds**

**Barndale Learning Plan**

**Term: 2023- 2024 Autumn 2**

The Tiger Who  
Came  
to Tea



Judith Kerr

A lift-the-flap picture book  
**Dear Zoo**

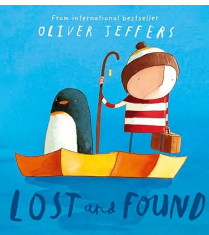


Rod Campbell

**The Enormous Turnip**

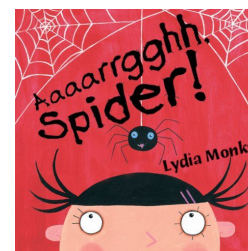
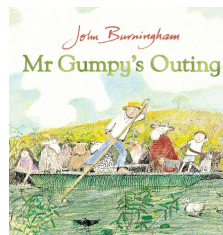


From international bestseller  
**OLIVER JEFFERS**



LOST and FOUND

John Burningham  
**Mr Gumpy's Outing**



**The Christmas Story**



## Books to Support Our Learning

### Physical Development

This half-term we will focus on negotiating obstacles. We will continue to develop our gross motor skills and spatial awareness to navigate. Our fine motor skills will be developed through various activities, such as threading and using tweezers. We will also be working on our own individual targets and having weekly swimming lessons to strengthen our muscles.



## Can We Stay?

### Personal, Social and Emotional Development

This term we will be focussing on Managing Self. We will be working on having more independence to manage our personal hygiene, such as the skills needed for dressing, washing hands, going to the toilet and making choices about our diet. We will also be working on our own individual targets.

### Literacy

This half term we are focussing on identifying sounds. We will be playing lots of sound games and developing our listening and attention skills. We will continue to work on our own individual targets and enjoy lots of different stories.

### Communication and Language

Communication is at the heart of everything we do in Ladybird class. We will be working on building our communication skills and understanding of language through spoken words, Makaton and PECS. As well as being incorporated into everything we do, we will work on our individual targets through small group activities and 1:1 work with an adult.

### Mathematics

This half-term we will focus on understanding basic mathematical principles, such as one-to-one correspondence, as well as consolidating our previous learning. We will also be working on individual targets to develop our numeracy skills. Our measure work this half-term will focus on weight and consolidating our work on size.

### Expressive Arts and Design

This half-term we will have a focus on sounds and music related to everyday life at home, including enjoying a range of traditional songs in our daily songtime. We will also explore a variety of materials and techniques to create artwork based on the homes, festivals and celebrations we learn about.

### Therapeutic Input

We will be working closely with the Speech and Language Therapist, Physiotherapist, Occupational Therapists and Multi-sensory teacher to work on our individual targets.

### Understanding the World

Through our topic work on homes and being welcome, we will look at how we can include everybody. We will focus on People and Communities and how different traditions and beliefs are celebrated in the home. We will also begin to look at the change in seasons as Autumn begins to change into Winter.