

About Us

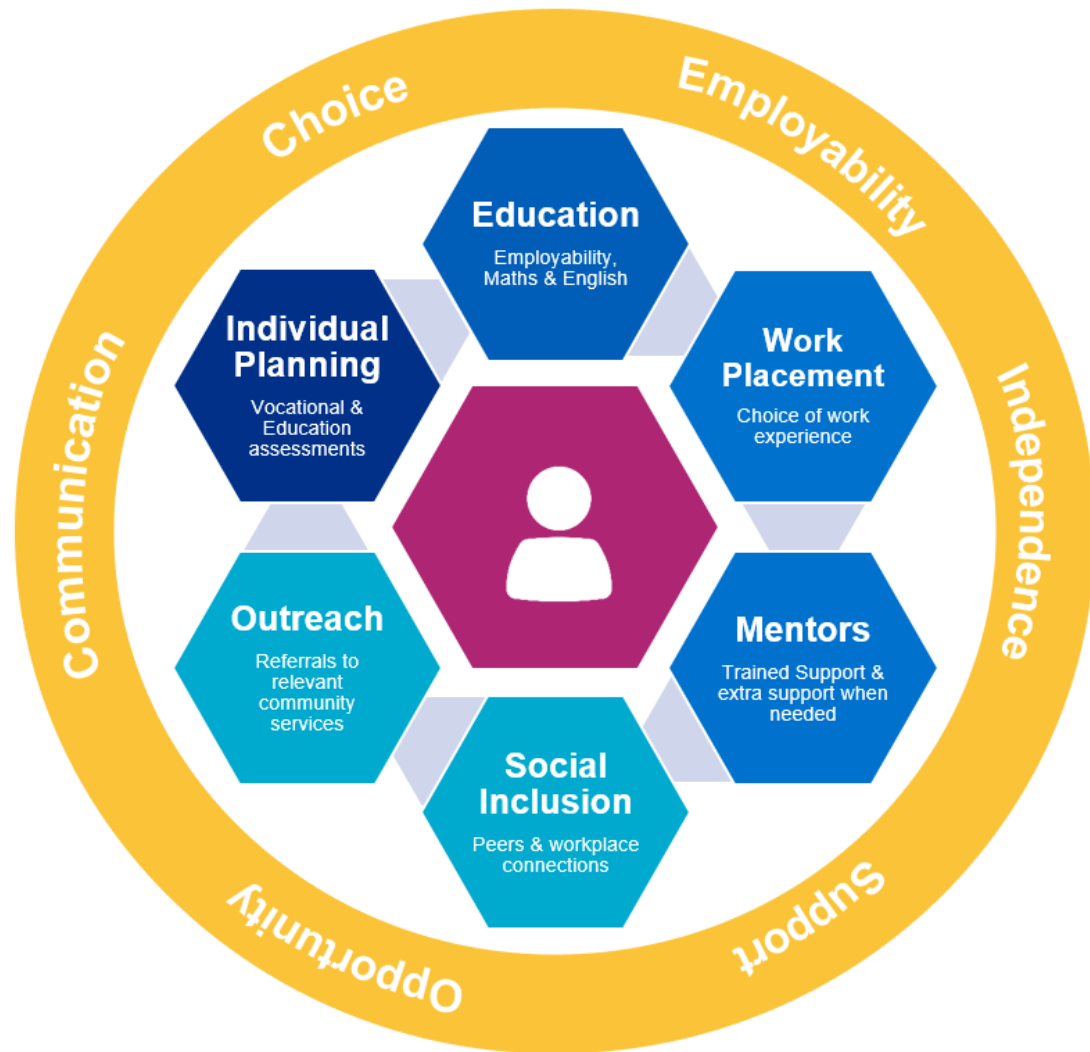


What is Project Choice?

- A specialist **College** providing tailored educational support, and a **supported internship course**
- For young adults aged 16-24 with learning difficulties, disabilities, and/or Autism.
- Partner with NHS Trusts and private businesses to create valuable work experience opportunities.
- Person-centred, outcome focused, quality driven and based on excellence.
- Funded by the ESFA & commissioning Local Authorities.



Our Approach



Stage 3

Entry Level Pathway

Using skills to progress onto

- Paid employment
- Volunteering
- Apprenticeships
- Princes' Trust
- Mainstream Preparation for work schemes

**Employment/
Apprenticeship**

Stage 2

Pre-Entry Level Pathway

Learning and exploring skills to progress into Entry level pathways

- Exploring interests and work options that match skills
- Employability skills, maths & English
- Supported employment schemes

Supported Internships

For learners aged 16-24

One-year fulltime education.
Each week, up to 1 day education & up to 4 days in three, 12-week placements

Stage 1

Foundation Pathway

Exploring options in supported school experience.

Work Experience

For school aged students 16-19

One half day placement per week for 6 weeks coordinated through school/ college

Why Project Choice?

In 2020 – 2021 only

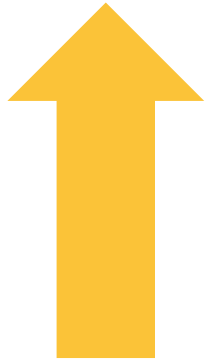
5.1%

of adults with learning
disabilities
aged 18-64



were in **paid
employment**

(BASE, 2021)



Research has found that Supported
Internships increase
Self-determination and confidence

Participation

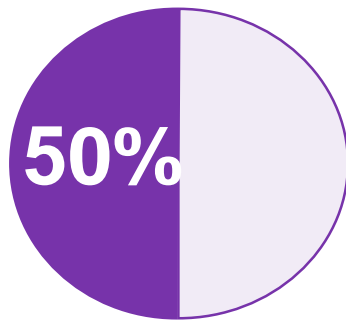
Reciprocal relationships

Social Inclusion in the workplace

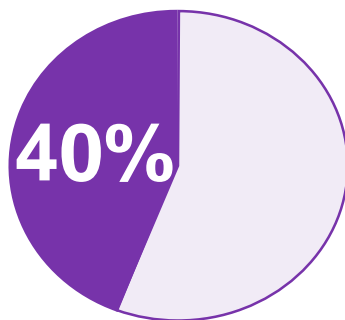
(Hanson et al, 2021)

Project Choice Impact

In 2020 - 2021 Project Choice interns....

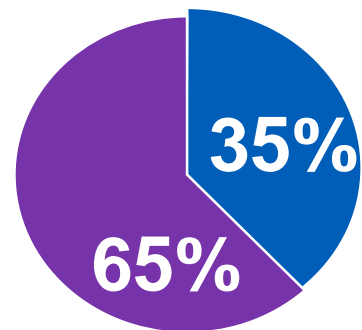


entered **paid employment, apprenticeships** or **volunteering** roles.



went on to complete **further education**

And of these interns



35% went into **NHS roles** and 65% went into **local and private businesses**.

Our College

In 2020 - 2021 Project Choice provided



540

hours of
education

for each
of our



160

Interns

in
over



15

Areas
across England

with a



93%

course
completion rate

Our Network

This Academic year, nationwide, Project Choice has worked in collaboration with.....

14



Trusts



55

Third Sector &
Private Businesses

Project Choice Support

We support our partners and Interns by:

- Training designated staff to be **mentors**
- Create **bespoke roles and responsibilities** that match the interns skills
- **Weekly or fortnightly reviews**
- **Job Coach** organised as indicated by the EHCP or need.
- **Direct contact to local Project Choice** Coordinator and Area Manager

The Intern should cost

£0.00

and should always be of
benefit to your business



The Benefits



NHS Trusts

- Meets the Talent for Care agenda to increase employment for vulnerable groups.
- Project Choice and Supported Internships are included in the NHS 5 year strategic plan.
- Labour and skills support for already stretched NHS workforce.



Local Authorities

- Meets the requirements of the Preparing for Adulthood Agenda
- Simplified transition framework for SEND school leavers.
- Employment opportunities and working young people increases economic impact of the LA.

The Benefits



Local Business

- Additional staff support for your business.
- Creating diverse work environments
- Upskilling staff to be mentors
- Free training on disability awareness and mentoring
- Support with Access to work applications
- Direct links to the local community and the NHS.



National Business

- Additional staff support for your business.
- Meets the requirements of Disability Confident Employer commitment.
- Strengthening your Corporate Social Responsibility.
- Free training on disability awareness and mentoring to staff.
- National recognition as being a partner with the NHS.

How are we different?



No additional costs to your business or Trust.



All education is delivered by our College.



Flexible work placements



We care for our learners and our partners and provide all the support you need for success.

Thank you for

supporting vulnerable youth,
giving people an opportunity
&
supporting the NHS.



Contact Us



Carmel Murray-Cooper

E: EMAIL

carmel.murraycooper@hee.nhs.uk

Tel 07827825218

[Project Choice - Supported Internships | Health Education England \(hee.nhs.uk\)](#)



Health Education England